

Data Sheet

AIRLOCK 450TF & 550TF

Quick disconnect for autoclave operation

DESCRIPTION

The Airlock 450TF and Airlock 550TF are specifically designed for use in the autoclave environment. Its sturdy design performs well in higher temperature and pressure cure cycles. Both quick disconnects are made with FKM O-rings that are not attacked by epoxies.

BENEFITS

- Standard design compatible with Vac Valves and Hoses.
- Quick disconnect feature for fast loading/unloading of ovens and autoclaves.
- Shut off valves prevent vacuum loss after disconnect.

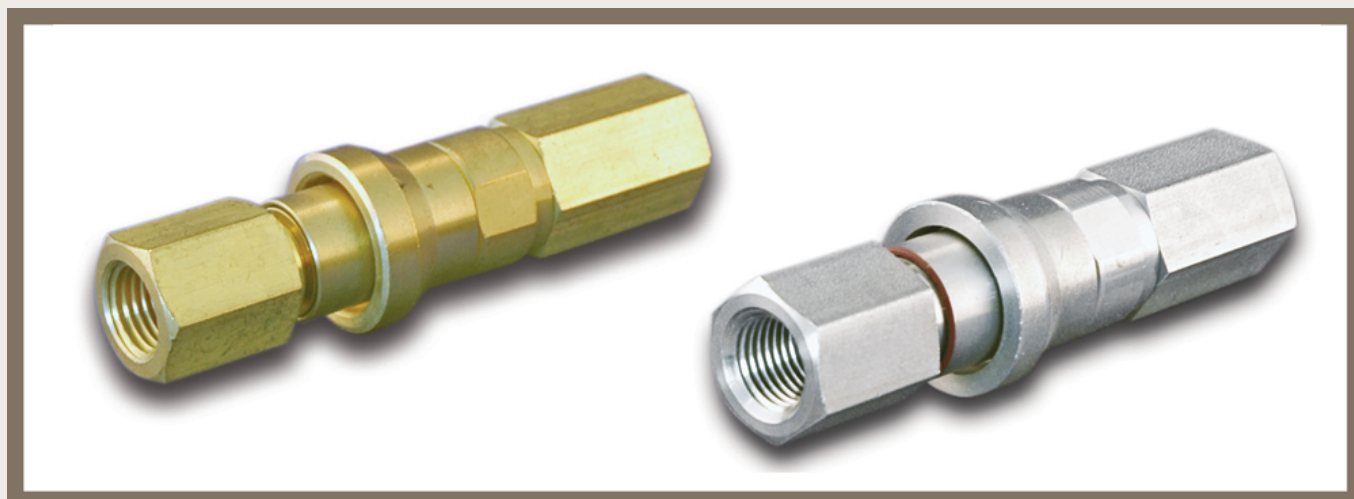
TECHNICAL DATA

Material type	Airlock 450TF: Brass Airlock 550TF: Stainless Steel
Material type of O ring seals	FKM elastomer
Connection to hose	Threaded
Screw thread	1/4 inch female NPT
Coupling size	1/4 inch
Service temperature	Airlock 450TF: 232°C Airlock 550TF: 287°C

SIZES

Socket Type	Product Reference
Female threaded	Airlock 450TF
Female threaded	Airlock 550TF

- Other thread sizes available upon request.



Last updated : 2015-09-30

Catalogue position : [Vacuum valves and hoses](#)