

Data Sheet

GREENFLOW 75

High performance, low profile resin distribution medium

■ DESCRIPTION

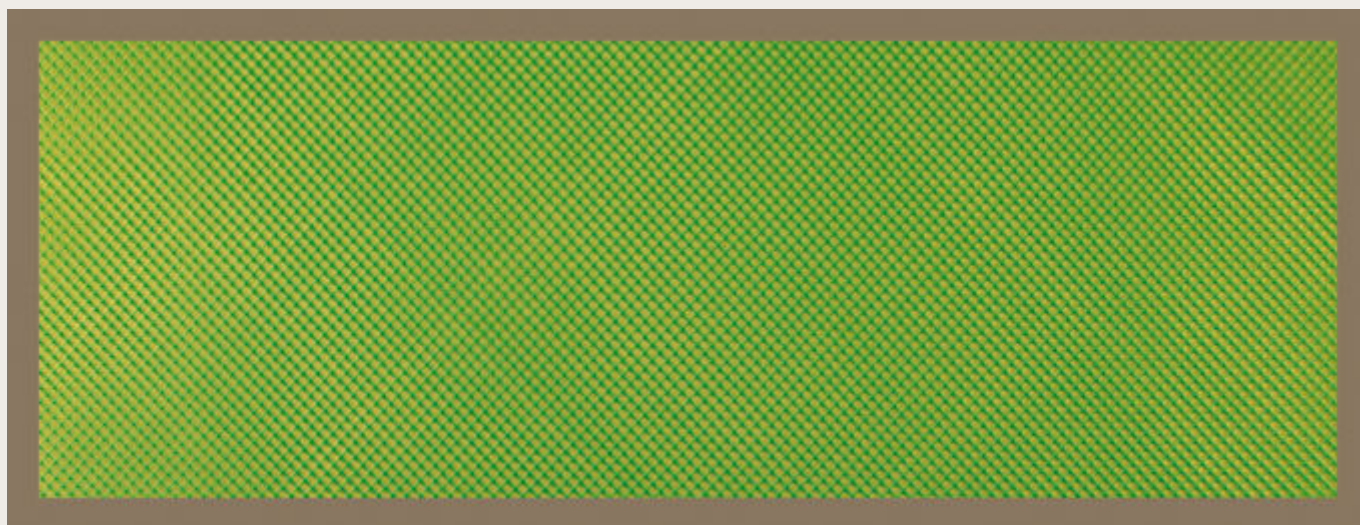
Greenflow 75 is designed to efficiently distribute resin with little waste due to the low profile, tight construction. Greenflow 75 can be used with polyester, vinylester and epoxy resins.

■ TECHNICAL DATA

Material type	Polypropylene
Colour	Green
Configuration of net	Extruded
Maximum use temperature	150°C
Mesh weight	98 g/m ²
Shelf life	Unlimited when stored in original packaging at 22°C

■ SIZES

Thickness	Width	Length
0,9 mm	1,04 m	106,7 m
0,9 mm	1,52 m	106,7 m



■ NOTES

- This product is an extruded mesh and does not fray when cut.
- The maximum use temperature is dependent upon the duration at maximum temperature and is process specific, Airtech recommends testing prior to use.

Last updated : 2020-01-02

Catalogue position : [Resin infusion products](#)

As the conditions or methods of use, including storage, are beyond our control, Airtech Europe does not assume any responsibility for the performance of this material for any particular use. The material is sold "as is". Airtech Europe disclaims, and buyer waives, any and all implied warranties, including without limitation the implied warranties of merchantability and of fitness for particular use. The information contained herein represents typical properties and should not be used for specification purposes. This translation is provided for your convenience only. The official language is English and the official law is Luxembourg.