

Data Sheet

RESINFLOW 100

Resin distribution medium

■ DESCRIPTION

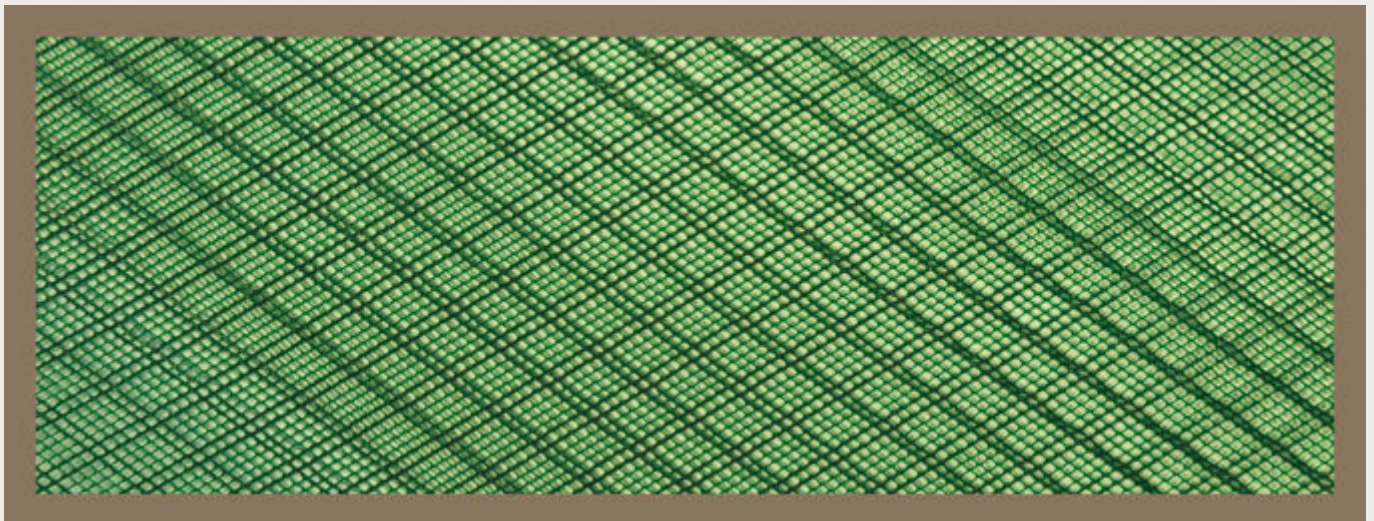
Resinflow 100 is designed to assist resin flow through the part during the vacuum assisted resin infusion process. Our resin flow medium works well with polyester, vinylester and epoxy resins. This product is an extruded flow medium and it does not fray when cut or roll up at the ends.

■ TECHNICAL DATA

Material type	HDPE
Colour	Green/White
Configuration of net	Extruded
Maximum use temperature	125°C
Mesh weight	252 g/m ²
Shelf life	Unlimited when stored in original packaging at 22°C

■ SIZES

Thickness	Width	Length
1,1 mm (0,043 inch)	1,2 m (39 inches)	50 m (164 feet)



■ NOTES

- Other sizes available upon request.
- The maximum use temperature is dependent upon the duration at maximum temperature and is process specific, Airtech recommends testing prior to use.