

Data Sheet

GREENFLOW 185

High drapable knitted resin distribution medium

■ DESCRIPTION

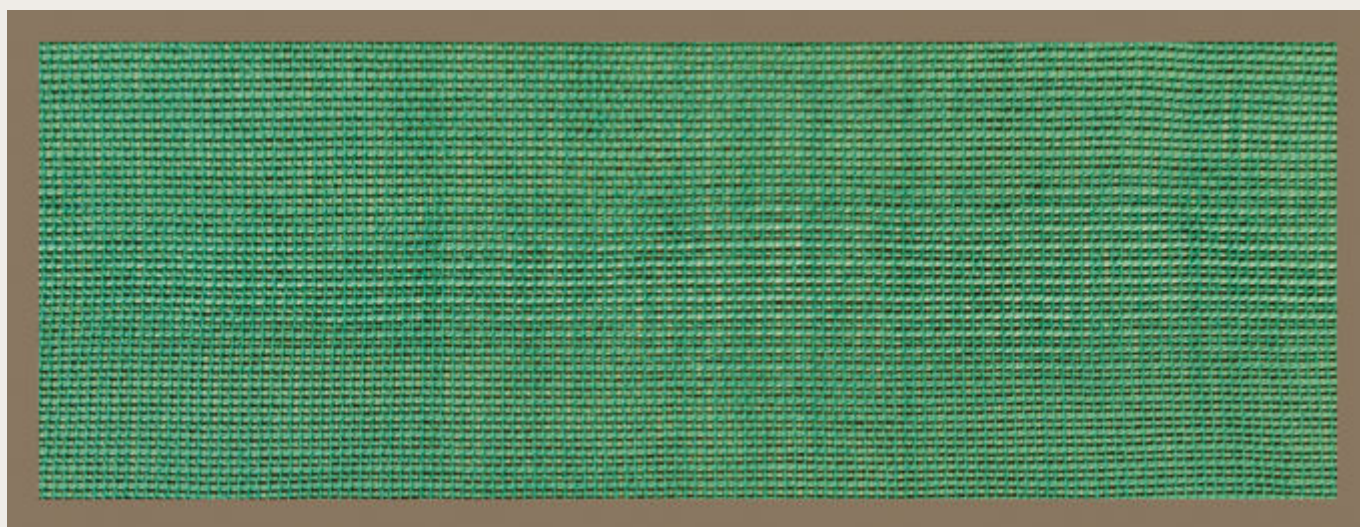
Greenflow 185 is designed to assist resin flow through the part during the vacuum assisted resin infusion process. Our resin flow medium works well with polyester, vinylester and epoxy resins. This product is a knitted flow medium and is highly drapable.

■ TECHNICAL DATA

Material type	HDPE
Colour	Green
Configuration of net	Knitted
Maximum use temperature	125 °C
Mesh weight	185 g/m ²

■ SIZES

Thickness	Width	Length
1 mm	3,6 m	100 m



■ NOTES

- > Other sizes available upon request.
- > Greenflow 185 does not roll up at the end when cut.

Last updated : 2010-02-15

Catalogue position : [Resin infusion products](#)

As the conditions or methods of use, including storage, are beyond our control, Airtech Europe does not assume any responsibility for the performance of this material for any particular use. The material is sold "as is". Airtech Europe disclaims, and buyer waives, any and all implied warranties, including without limitation the implied warranties of merchantability and of fitness for particular use. The information contained herein represents typical properties and should not be used for specification purposes. This translation is provided for your convenience only. The official language is English and the official law is Luxembourg.