

Data Sheet

AQD 500TF

Two piece quick disconnect

■ DESCRIPTION

The AQD 500TF quick disconnect couplings are made of high carbon steel that have been plated to halt oxidation. The couplings have internal valves so when disconnected the airflow is shut off in both plug and socket. This means your vacuum bag holds vacuum even after the vacuum hose has been disconnected. The AQD 500TF are rugged dependable disconnects that can be installed in minutes when used with Airtech Vac Valves. The AQD 500TF comes with a threaded female fitting designed to receive our Airflow autoclave and oven hoses. Use our AQD 500BF (barbed fitting) when attaching to rubber vacuum lines.

■ BENEFITS

- Standard design compatible with Vac Valves and Hoses.
- Quick disconnect feature for fast loading/unloading of ovens and autoclaves.
- Shut off valves prevent vacuum loss after disconnect.

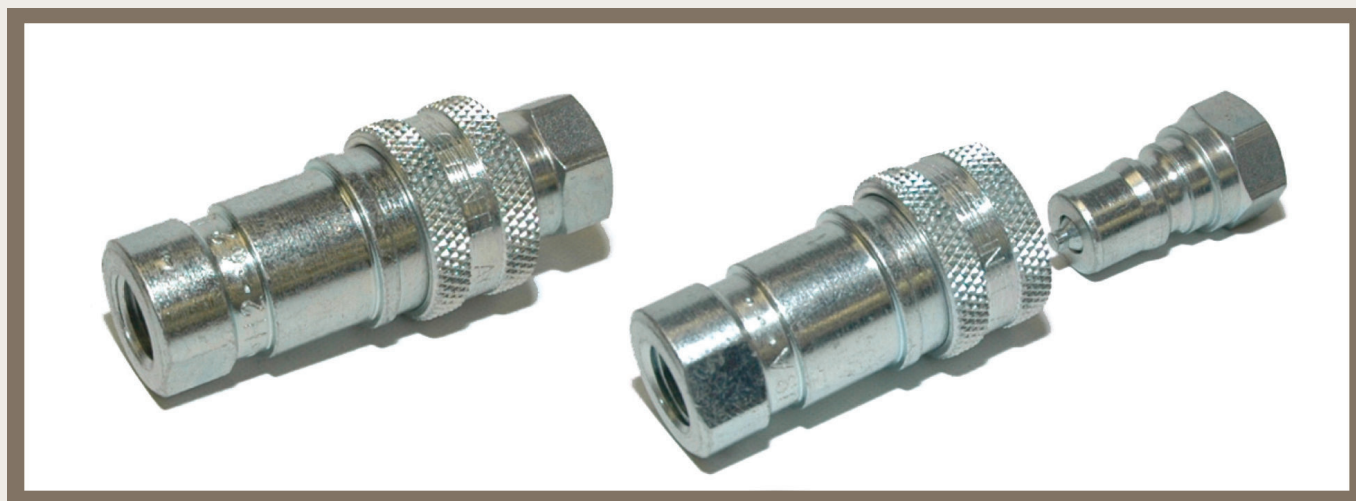
■ TECHNICAL DATA

Material type	Carbon steel
Material type of O ring seals	FKM elastomer
Connection to hose	Threaded
Screw thread	1/4 inch female NPT
Coupling size	1/4 inch
Service temperature	260°C

■ SIZES

Socket Type	Product Reference
Female threaded	AQD 500TF

- Other thread sizes available upon request.



■ NOTES

- AQD 500TF on the autoclave wall that are not being used for hose connections should be protected with BC500 Blanking caps to avoid vacuum leakage. Otherwise autoclave pressure will compress the spring seal and open the valve resulting in lost vacuum and pressure.

Last updated : 2015-11-05

Catalogue position : [Vacuum valves and hoses](#)

As the conditions or methods of use, including storage, are beyond our control, Airtech Europe does not assume any responsibility for the performance of this material for any particular use. The material is sold "as is". Airtech Europe disclaims, and buyer waives, any and all implied warranties, including without limitation the implied warranties of merchantability and of fitness for particular use. The information contained herein represents typical properties and should not be used for specification purposes. This translation is provided for your convenience only. The official language is English and the official law is Luxembourg.