

PROVISIONAL TDS

## UR5639

### Polyurethane Resin

UR5639 is a two-part, soft optically clear polyurethane resin ideal for use in protective applications. Due to a carefully selected blend of components an extremely durable medium viscosity system is achieved, which can be used for a wide variety of applications.

- Water white transparency; ideal for LED applications
- 2:1 mix ratio; allows ease of processing
- Does not contain IPDI; low hazard material
- High resistance to weather/UV; suitable for a range of environments

<b>Approvals</b>	<b>RoHS Compliant (2015/863/EU):</b>	<b>Yes</b>
	<b>UL Approval:</b>	<b>No</b>

#### Typical Properties

Liquid Properties:	Base Material	Polyurethane
	Density Part A - Resin (g/ml)	0.96
	Density Part B - Hardener (g/ml)	1.16
	Part A Viscosity (mPa s @ 23°C)	1690
	Part A Viscosity (mPa s @ 35°C)	804
	Part B Viscosity (mPa s @ 23°C)	700
	Mixed System Viscosity (mPa s @ 23°C)	1300
	Mix Ratio (Weight)	2:1
	Mix Ratio (Volume)	2.38:1
	Usable Life (20°C)	~25 mins
	Gel Time (23°C)	~34 mins
	Cure Time (23 °C)	24 hours
	Cure Time (60 °C)	4 hours
	Colour Part A - Resin	Clear
	Colour Part B - Hardener	Clear
	Storage Conditions	Dry Conditions: Above 5°C, Below 30°C
	Shelf Life	12 months
	Shrinkage	< 1%

#### Copyright Electrolube 2013

All information is given in good faith but without warranty. Properties are given as a guide only and should not be taken as a specification.

Electrolube cannot be held responsible for the performance of its products within any application determined by the customer, who must satisfy themselves as to the suitability of the product.

Ashby Park, Coalfield Way,  
Ashby de la Zouch,  
Leicestershire LE65 1JR

T +44 (0)1530 419 600

F +44 (0)1530 416 640

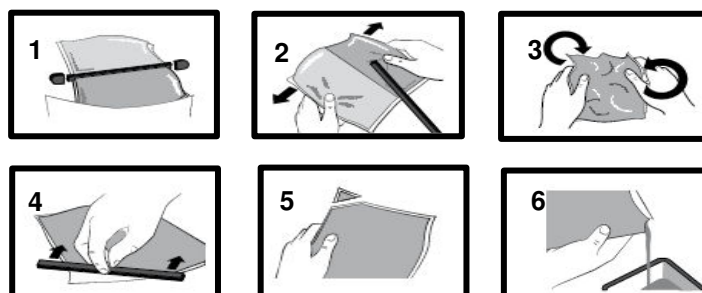
BS EN ISO 9001:2008  
Certificate No. FM 32082

Cured System:	Refractive Index	1.487
	Thermal Conductivity (W/m.K)	0.30
	Cured Density (g/ml)	1.03
	Temperature Range (°C)	-40 to +120
	Max Temperature Range (Short Term (°C)/30 mins) (Application and Geometry Dependent)	+130
	Dielectric Strength (kV/mm)	11
	Volume Resistivity (ohm-cm)	10 <sup>14</sup>
	Shore Hardness	A55
	Colour (Mixed System)	Water White
	Flame Retardancy	No
	Loss Tangent @ 50 Hz	0.025
	Permittivity @ 50 Hz	3.50
	Comparative Tracking Index	Not Measured
	Water Absorption (9.7mm thick disk, 51mm diameter) 10 days @ 20°C	1.36%

## **Mixing Procedures**

### **Resin Packs**

When in Resin pack form, the resin and hardener are mixed by removing the clip and moving the contents around inside the pack until thoroughly mixed. To remove the clip, remove both end caps, grip each end of the pack and pull apart gently. By using the removed clip, take special care to push unmixed material from the corners of the pack. Mixing normally takes from three to four minutes depending on the skill of the operator and the size of the pack. Both the resin and hardener are evacuated prior to packing so the system is ready for use immediately after mixing. The corner may be cut from the pack so that it may be used as a simple dispenser. There is also a YouTube video ([Polyurethane Mixing Instructions](#)) available on the Electrolube channel to show the mixing process.



### **Bulk Mixing**

When mixing, care must be taken to avoid the introduction of excessive amounts of air. Automatic mixing equipment is available which will not only mix both the resin and hardener accurately in the correct ratio but do this without introducing air. Containers of Part A (Resin) and Part B (Hardener) should be kept sealed at all times when not in use to prevent the ingress of moisture. Bulk material must be thoroughly mixed before use. Incomplete mixing or use of the wrong mix ratio will result in erratic or partial curing.

### **Additional Information**

- Cleaning:** It is far easier for machines & containers to be cleaned before the resin has been allowed to cure. Electrolube's RRS is suitable for cleaning machines and containers and cured resin may be slowly softened and removed by soaking in our RRS.
- Curing:** Do not heat cure large volumes immediately. Allow these to gel at room temperature and post-cure at high temperature if required (refer to liquid properties for details). The material is not suitable for thick sections above 50mm as the exotherm build up during cure will create voids.
- Storage:** When storing under very cold conditions, the hardener may crystallise. If this occurs, simply warm (40°C) the container gently until all crystals have re-melted.
- Health & Safety:** Always refer to the Health & Safety data sheet before use. These can be downloaded from [www.electrolube.com](http://www.electrolube.com)

Revision 3: Mar 2019