

## Data Sheet

## GREENFLOW 75

High performance, low profile resin distribution medium

### ■ DESCRIPTION

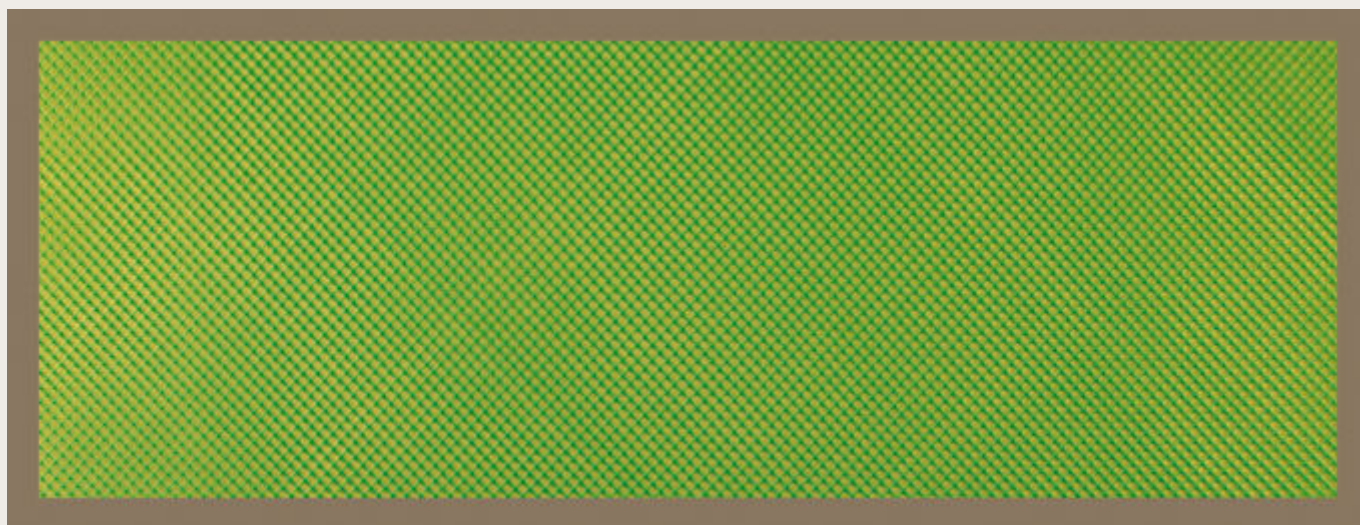
Greenflow 75 is designed to efficiently distribute resin with little waste due to the low profile, tight construction. Greenflow 75 can be used with polyester, vinylester and epoxy resins.

### ■ TECHNICAL DATA

Material type	Polypropylene
Colour	Green
Configuration of net	Extruded
Maximum use temperature	150°C
Mesh weight	98 g/m <sup>2</sup>
Shelf life	Unlimited when stored in original packaging at 22°C

### ■ SIZES

Thickness	Width	Length
0,9 mm	1,04 m	106,7 m
0,9 mm	1,52 m	106,7 m



### ■ NOTES

- This product is an extruded mesh and does not fray when cut.
- The maximum use temperature is dependent upon the duration at maximum temperature and is process specific, Airtech recommends testing prior to use.

Last updated : 2020-01-02

Catalogue position : [Resin infusion products](#)