



BOUCHEX WBS / - P3

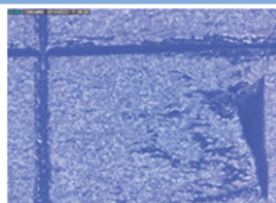


BOUCHEX WBS & WBS P3 WATER BASED SEALER

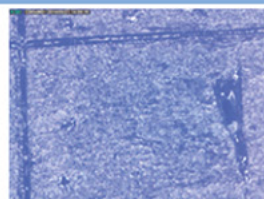
- Formulated with specific very low viscosity resin to penetrate into the micro-porosities of the mold surface.
- Easy to apply.
- Two grades: standard WBS or WBS P3 for more porous surface.
- Very suitable to reduce strongly mold fooling due to penetration and adherence of resins monomers into the micro-porosities.
- Very suitable to improve the water based release agents coating. BOUCHEX and MOULEX® water based release agents have excellent affinity. The surface tensions of both products are similar. That's the reason why the BOUCHEX is also good primer to enhance coating and performance of MOULEX® water based release agents.

MOLD SURFACE – ZOOM X200

WITHOUT BOUCHEX

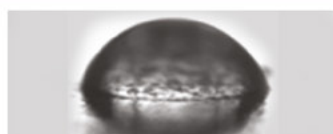


WITH BOUCHEX



BOUCHEX AS A PRIMER FOR MOULEX®

MOULEX® WD401 wettability on a mold surface WITHOUT BOUCHEX



MOULEX® WD401 wettability on a mold surface WITH BOUCHEX



SPECIFICATION DATA*

BOUCHEX	COLOR	FORM	DRY CON TAINS	PH	DENSITY
WBS	WHITE	LIQUID	2.7 - 3.7%	Liquid	0.98-1.00
WBS-P3	WHITE	LIQUID	3.00-4.00%	Liquid	0.98-1.00

*After delivery, use and storage of our products not being under our control, we decline any express or implicit responsibility as to their behaviour.



BOUCHEX WBS / - P3



GENERAL RECOMEMNDATIONS FOR USE

This product is used only for new molds or after strong cleaning or maintenance.

- 1.To apply two layers with a cloth, a brush or a specific spray gun.
- 2.To wipe off with clean cotton cloth and wait 2 minutes between each layer .
- 3.To polish with an antistatic, clean and soft cotton cloth.

To wait one night at room temperature before applying release agent.

Test should be done before production using
For technical support, or full specific recommendation please contact us:
contact@additek.net

Consumption :	Applying with a cloth	Applying with a spray gun
	100g/m ²	15g/m ²
Packaging :	5kg drums	

SAFETY RECOMMENDATIONS - PROTECTION

Precautions for safe handling and storage

Avoid contact with skin and eyes, inhalation of vapors and mists. Do not eat or drink while working. Keep away from food, drink and feed. Instructions as regards storage premises: Adequately ventilated premises.

Exposure controls/personal protection

Eye protection: eye glasses with side protection. Protection for hands: PVA (polyvinyl alcohol).



If the product is sprayed, the use of a respiratory protection is recommended: filtering half-face mask (DIN EN 149).

For more details see safety data sheet or contact us: contact@additek.net